

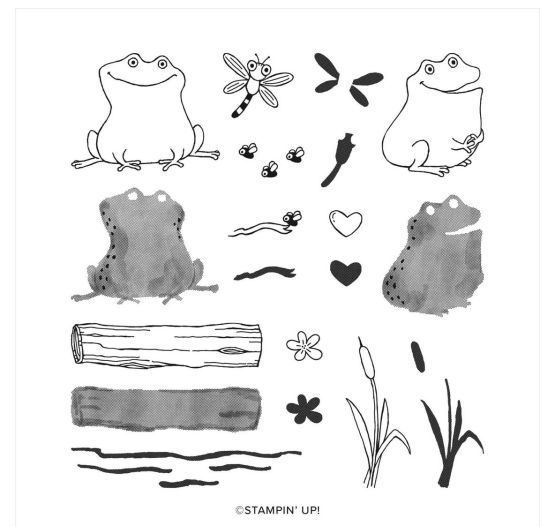
Hello Friend



SUPPLY LIST

- **Stamp Set:** At The Pond, Hello Ladybug
- **Cardstock:** Basic White Thick, Soft Sea Foam, Granny Apple Green
- **Stampin' Pads:** Early Espresso, Old Olive, Soft Suede, Granny Apple Green
- **Misc:** Flowers & More Designer Series Paper (DSP), Dragonfly Trinkets, Scissors, Adhesive, Stampin' Dimensionals

This set is an Exclusive Host Stamp Set featured in the 2023 January - April Mini Catalog. Qualifying orders earn Stampin' Rewards that can be used toward exclusive host sets and merchandise.



At The Pond
#160801

CUTTING INSTRUCTIONS

Soft Sea Foam: 4-1/4" x 5-1/2"

Basic White: 5-1/4" x 11", score at 3-1/2 and 7-1/2

Granny Apple Green: 3-3/4" x 5"

Basic White (front layer): 2-3/4" x 4"

Basic White (inside layer): 2-3/4" x 4"

Basic White (front image): 2-1/2" x 3-3/4"

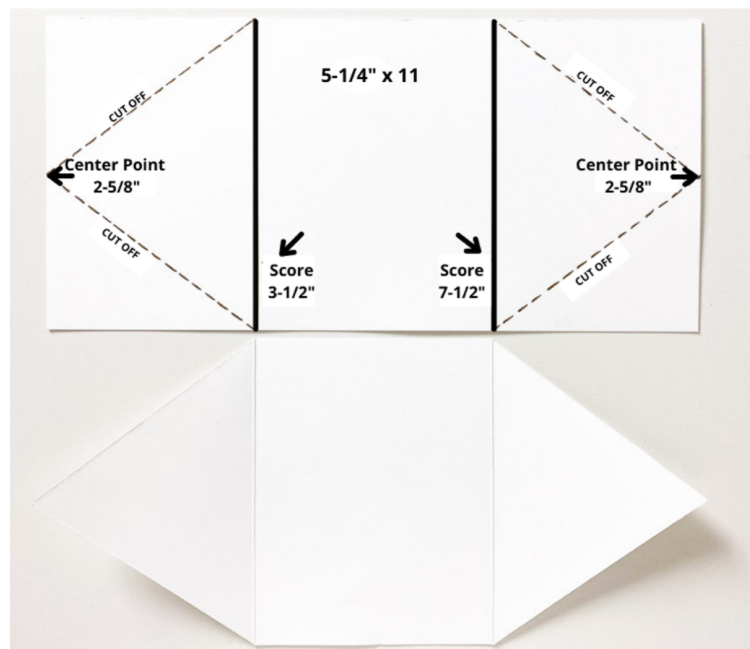
DSP (belly band): 1-1/4" x 11"

Basic White (scrap)



CARD TUTORIAL

- To create the card base, measure, score and cut the Basic White Cardstock. See picture below. Then, center and adhere to the Soft Sea Foam Cardstock.
- Center and adhere the Granny Apple Green and Basic White layers inside the card.
- Create the belly band by wrapping the DSP strip around the card, so the overlapping ends meet in front of the card. Secure the ends together with adhesive. The belly band should easily slide on and off.
- Use Early Espresso to stamp the frog outline on a scrap of Basic White. Then, stamp the body of the frog using Granny Apple Green. Then, use scissors to cut out.
- On the Basic White front image layer, use Early Espresso to stamp the outlines of the log and cattails. Then, use Soft Suede and Old Olive to stamp the log and cattails to filling in the outline images.
- Use Soft Suede to stamp the sentiment on a scrap of Basic White Cardstock. Trim to size and cut a banner edge on the right side.
- Wrap the left end of the sentiment strip around the back of the image layer and secure with adhesive.
- Adhere the frog to the image layer using Stampin' Dimensionals.
- Layer and adhere the image layer to the front Basic White layer using Dimensionals, as shown. Then, adhere to the Belly Band.
- To finish, adhere a Dragonfly Trinket "flying" above the frog.



For more information visit BrandysCards.com | email: brandy@brandyscards.com

All stamped images in this document are ©1990 - 2023 Stampin' Up! unless otherwise stated.
This printable PDF and the contents are my sole responsibility as an Independent Stampin' Up! Demonstrator and is not endorsed by Stampin' Up!